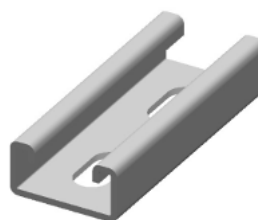
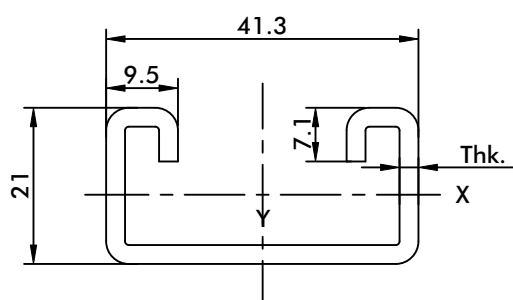


### Product Overview

The Easyflex EFSC41X21 Slotted Channel is engineered to provide robust support in modular construction systems. With a consistent width of 41.3 mm and height of 21 mm, this channel is designed to meet the demands of various structural applications.

### Dimensions



### Material Composition

**Base Material:** Pre-Galvanized Steel (IS 277) / Mild Steel (IS 1079) / Equivalent

Sheet Thickness(Thk.)
1.6 mm
2.0 mm
2.5 mm

### Surface Finish

Surface Treatment	
Surface Finish	Coat Thickness
Pre-Galvanized	10-12 microns
Hot Dip Galvanized	60-75 microns

**Product Identification Code:-**(E.g., EFSC41X21X2.5-GP , EFSC41X21X2.5-HDG)

**EFSC** : Easyflex Brand Slotted Channel  
**41X21** : Channel Dimensions  
**1.6/2/2.5** : Sheet Thickness  
**GP** : Pre-Galvanized  
**HDG** : Hot Dip Galvanize

### Applications

1. Ideal for creating support frameworks in electrical and mechanical installations.
2. Suitable for constructing shelving, racks, and other structural Modular supports.
3. Commonly used in HVAC systems for mounting and support purposes.

### Benefits

1. **Versatility:** The slotted design allows for flexible configurations and easy adjustments during installation.
2. **Durability:** Constructed from high-quality steel, ensuring long-lasting performance even in demanding environments.
3. **Ease of Use:** Compatible with a wide range of fittings and accessories, simplifying the assembly process.

### Technical Details:-

Technical Specification		Sheet Thickness (Thk.) (mm)		
		1.6	2.0	2.5
Area of section	mm <sup>2</sup>	134	163	198
Weight	kg/m	1.1	1.3	1.7
Moment of inertia x-x	mm <sup>4</sup>	7383	8697	10089
Moment of inertia y-y	mm <sup>4</sup>	37196	44969	53880
Section Modulus x-x	mm <sup>3</sup>	596	702	815
Section Modulus y-y	mm <sup>3</sup>	1801	2178	2609
Maximum Allowable Moment M <sub>x</sub>	N-mm	83440	98280	114100
Maximum Allowable Moment M <sub>y</sub>	N-mm	252140	304920	365260